

## Easy\_Projector

Price/Performance Digital Profile Projector

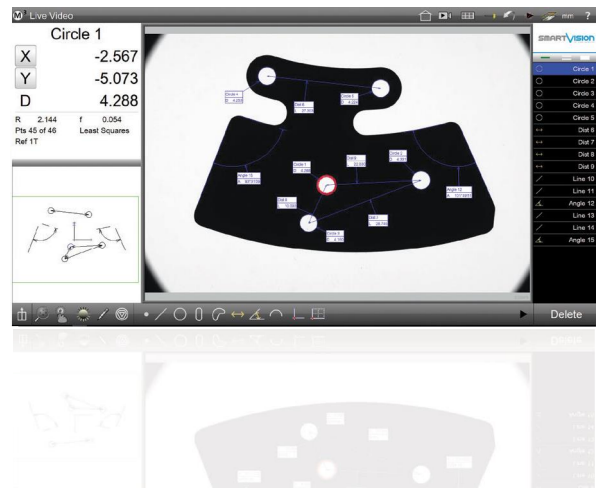


# Easy\_Projector

Price/Performance Digital Profile Projector



*"Easy\_Projector the best price/performance video measuring machine for the future of metrology"*



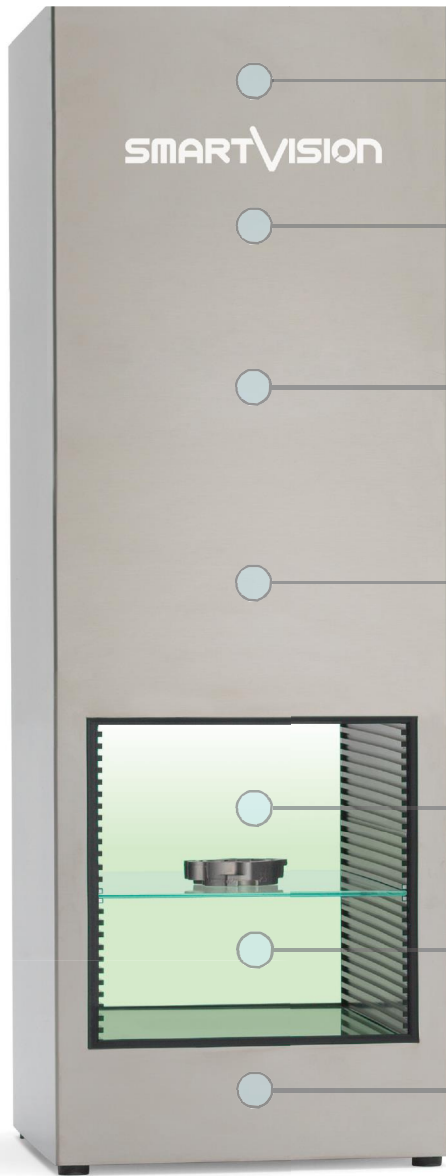
## Low Price & High Performances

This special line offers products of same quality as traditional Smart\_Projector family and similar performances related to the specific size of FoV. With no additional functionalities it makes what you need for your basic dimensional control in a fast and simple way with a small investment. It is equipped with a Next Unit Computing (NUC) and a metrology software.

## Product Benefits

- Specifically suited for massive (production) quality inspection, in-line control, incoming inspection
- Eliminates subjectivity and errors of operator-based gauging
- Increases number of quotas and quality check rate, up to 16000 checking features in a few seconds
- Performs full automatic reporting and SPC (Min, Max, Range, Average, Std Dev, 6 Sigma)
- Designed for in-production massive use
- Suitable for unskilled operators use
- Flexible investment with a fast Return on Investment
- Reduces time and costs of controls

## Easy\_Projector - Price/Performance Digital Profile Projector



Industrial camera

High performance Di-Electric Optics

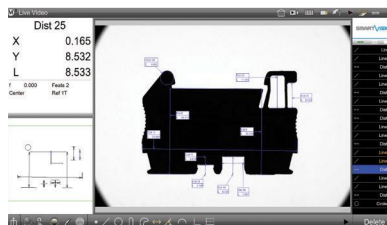
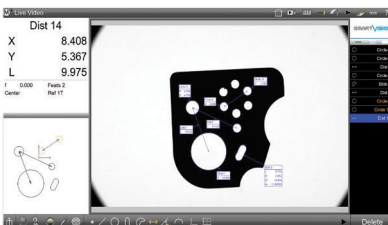
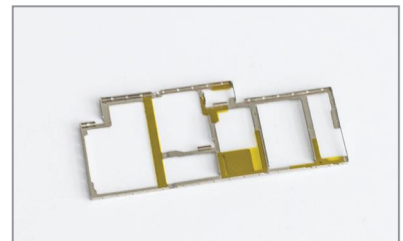
Rugged stainless steel industrial case  
Compact static equipment

Ready for Automation

Protected Two Side Open measuring chamber  
Easy object placement  
Height-adjustable interchangeable glass  
Customizable loading plate

Suitable for the production line

Directional Diascopic Light



# Specification

## Easy\_Projector - Price/Performace Digital Profile Projector

Processor	NUC PC without monitor with Windos 10x64 PRO
Optical System	Double telecentric lens
Field of View (FoV)	61 x 61
Shape	Rectangular with vignetting
Resolution	100
Resolution	1000
Measurement Area	100x100x100
Accuracy	6
Measurement Accuracy	±1 µm
Measurement Accuracy	±6 µm
Measurement Area	100x100x100
Measurement Area	100
Measurement Area	Directional
Measurement Area	Interchangeable glass
Measurement Area	10 to 100
Power Consumption	110-230 Vac 50-60 Hz
Power Consumption	1 A
Measurement Area	16000 features max
Measurement Area	XYθ (accepts random positioning)
Measurement Area	Angle, angularity, area, circumference, concentricity, diameter, flatness, form, length, parallelism, perpendicularity, radius, roundness, runout, straightness, symmetry, true position, width, true position.
Measurement Area	Ready to connect with SPC software
Measurement Area	*.dxf file with nominal values and tolerance
Measurement Area	*.dxf file for profile match, nominal values and tolerance
Measurement Area	Csv, Tsv, Txt
Measurement Area	Windows installed Printer (optional Pdf), Xps
Measurement Area	Supervisor, Users 1 to 10 (with password login and editable rights)
Measurement Area	English, German, Spanish, French, Italian, Portuguese, Russian, Chinese, Japanese, Polish, Czech, Romanian. All languages are editable.

<sup>1</sup> Diascopic Light Standard Directional led backlight.

<sup>2</sup> Standard models - other custom FoV available on request.

<sup>3</sup> Precision of measurement (±µm) of a line, obtained measuring a specific calibration target located approximately in FoV center, best focus position, at 100 C 10

<sup>4</sup> The dimensions of the measuring chamber are not the dimensions of the Field of View, therefore they have not to be considered as test area.

©2017, SmartVision. Technical specifications are approximated and are subject to change without notice. Printing errors excepted.



info@smartvision.it  
www.smartvision.it